



The following page(s) are extracted from multi-page Kuhnke product catalogues or CDROMs and any page number shown is relevant to the original document. The PDF sheets here may have been combined to provide technical information about the specific product(s) you have selected.

Hard copy product catalogues, and CDROMs have been published describing Kuhnke Pneumatics, Solenoids, Relays and Electronics; some divided into different books. A list of current publications is available on this web site or from our sales offices. Some may be available for download, but as substantially larger files.

Contact Details

Kuhnke sales and service in North America

Ellis/Kuhnke Controls
132 Lewis Street
Unit A-2, Eatontown
NJ 07724
USA

T: (800) 221 0714
T: (732) 291 3334
F: (732) 291 8154

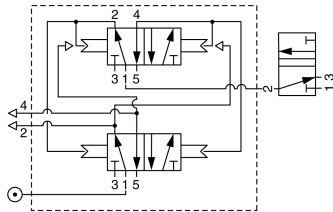
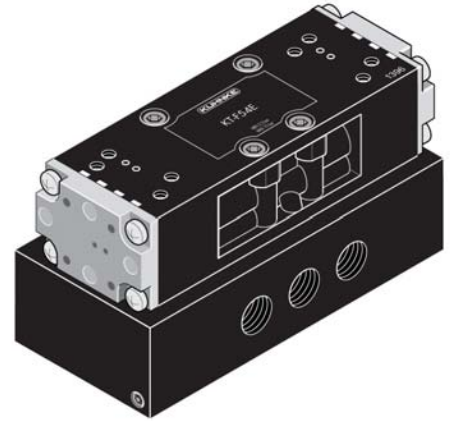
Important Note

The information shown in these documents is for guidance only. No liability is accepted for any errors or omissions. The designer or user is solely responsible for the safe and proper application of the parts, assemblies or equipment described.

Flip Flop Valve, Pneumatic Actuation

NPT Ports **75083-89-42**
Metric Ports **76083-89-42**

The Monostable Flip-Flop valve provides a 4 way switched output from an air pilot pulse signal of at least 300 ms in length. A pilot pressure is applied to the control port changing the valve output position. The output valve maintains position until the next pilot pulse signal is applied. The control pilot signal must be greater than 50% of the switched line pressure. Minimum operating pressure 35 PSI.



Port Size- 1/4
Orifice- 8mm
Body No.- 5S
Dimensions-
4 1/4" L x 2" W x 2 3/8" H.

Operating pressure range 35 to 145 PSI. Actuation force (pilot pressure): 35 PSI minimum.
Pilot port size is 1/8. Mounting via 4 through body holes 3/16" Dia.

For valve specifications see appendix. For detail dimensions contact factory.