



The following page(s) are extracted from multi-page Kuhnke product catalogues or CDROMs and any page number shown is relevant to the original document. The PDF sheets here may have been combined to provide technical information about the specific product(s) you have selected.

Hard copy product catalogues, and CDROMs have been published describing Kuhnke Pneumatics, Solenoids, Relays and Electronics; some divided into different books. A list of current publications is available on this web site or from our sales offices. Some may be available for download, but as substantially larger files.

Contact Details

Kuhnke sales and service in North America

Ellis/Kuhnke Controls
132 Lewis Street
Unit A-2, Eatontown
NJ 07724
USA

T: (800) 221 0714
T: (732) 291 3334
F: (732) 291 8154

Important Note

The information shown in these documents is for guidance only. No liability is accepted for any errors or omissions. The designer or user is solely responsible for the safe and proper application of the parts, assemblies or equipment described.

Miniature Panel Mounted Timer

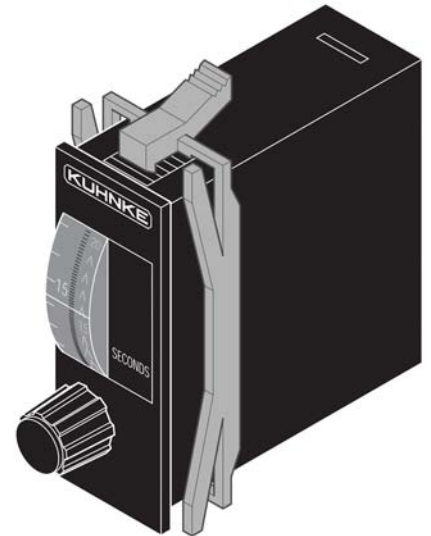
(Up to 5 minutes)

2 to 30 Seconds **51020-03**
 20 to 300 Seconds **51020-30**

The Mini-timer is an adjustable panel mounted time delay device (normally closed valve). Timing is set by adjusting the front dial. The timer is equipped with 2 vertical scales that indicate the set time and the time remaining in the cycle (countdown time).

To begin the timing operation, air pressure is applied to port one. When the set time is reached the internal valve is switched over to provide an output at port 2. The valve remains open until the input air is switched off. Removing the air supply at any time resets the timer.

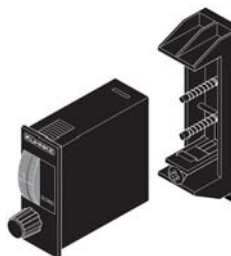
The mini timer is constructed of a molded body with a clear plastic lens for viewing the scales. Ports, 10-32 (M5) are located on the rear of the unit. The timer is panel mounted with a built in retaining clip.



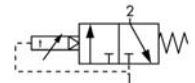
Accessories

A molded bezel (catalog no. **51025**) can be added to the panel to provide screw fastening of the timer for easy removal. The bezel cutout size is 2" x 2" and the bezel dimensions are 2 3/8" wide x 2 15/16" high.

A rear mounting bracket, (catalog no. **51031**) can be used to mount the timer in the rear of the panel or on a DIN rail as required. The bracket has built-in connections for side 10/32 (M5) porting.



Rear Mounting



Technical Specifications

Op. Pressure:
30 to 90 PSI

Connections:
10-32 (M5)

Media:
Filtered, dry air.
Non-lubricated

Operating Valve:
3 way (NC) - internal exhaust
Orifice size - 1mm, Cv -.2.
Flow @ 90 PSI – 1.5 CFM

Timing Start:
Application of line pressure to port 1.

Reset:
By removal line pressure

Reset Time:
200 ms

Repeatability:
± 0.3 Sec. 51020-03
± 3 Sec. 51020-30

Time Setting:
Via adjustment knob.

Setting Accuracy:
± 0.6 Sec. 51020-03
± 6 Sec. 51020-30

Materials:
Molded housing.

Operating Ambient:
0°C to 60°C (32°F to 140°F)

Dimensions (inches):
15/16" W x 1 7/8" H x 2 3/4" D.

Panel Cutout:
25/32 " W x 1 25/32 " H.

Mounting:
Retaining Clip.