



The following page(s) are extracted from multi-page Kuhnke product catalogues or CDROMs and any page number shown is relevant to the original document. The PDF sheets here may have been combined to provide technical information about the specific product(s) you have selected.

Hard copy product catalogues, and CDROMs have been published describing Kuhnke Pneumatics, Solenoids, Relays and Electronics; some divided into different books. A list of current publications is available on this web site or from our sales offices. Some may be available for download, but as substantially larger files.

## Contact Details

Kuhnke sales and service in North America

Ellis/Kuhnke Controls  
132 Lewis Street  
Unit A-2, Eatontown  
NJ 07724  
USA

T: (800) 221 0714  
T: (732) 291 3334  
F: (732) 291 8154

### Important Note

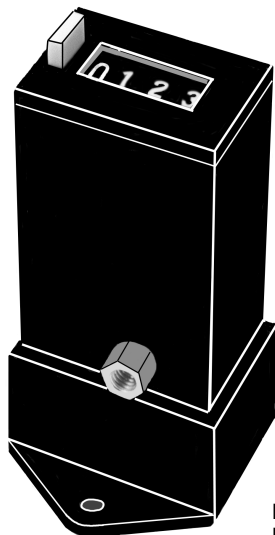
The information shown in these documents is for guidance only. No liability is accepted for any errors or omissions. The designer or user is solely responsible for the safe and proper application of the parts, assemblies or equipment described.

---

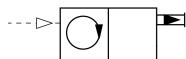
### Panel or Base Mounted Pneumatic Counters



Standard Clip Mounting



Base Mount



These pneumatic totalizers can be used as an event, part or lot counter. The counter registers pneumatic impulses on 4, 6 or 8 digit displays. Standard units operate with impulse pressures between 25 and 100 PSI. Low pressure models operate between 7.5 and 30 PSI. A variety of options include panel mounting with screws or mounting clips and surface mount with base or rear stud. The counters are available with or without manual reset.

Description		Catalog Number			
		Panel Mounted		Surface Mounted	
		Standard Clip Mtg.	Screw Fastening	With Base	Stud Mounting
With Manual Reset	4 Digit	PM14-21	PM14-11	APM14-01	PM14-01
	6 Digit	PM16-21	PM16-11	APM16-01	PM16-01
	8 Digit	Not Available	Not Available	Not Available	Not Available
Without Manual Reset	4 Digit	PM14-20	PM14-10	APM14-00	PM14-00
	6 Digit	PM16-20	PM16-10	APM16-00	PM16-00
	8 Digit	PM18-20	PM18-10	APM18-00	PM18-00

#### Options

For Low pressure version (7.5 to 30 PSI) add an "L" prefix to the catalog number.

A manual reset guard can be added to help prevent accidental resetting of the counter. Add suffix "V" to the catalog number.

For a spade key reset add suffix "VS" to the catalog number.

For a secret reset add an "S" suffix.

Standard designs have 10-32 ports, specify adaptor for 1/8 port if required.

### Technical Specifications

**Op. Pressure:**

25-100 PSI Std.  
7.5 to 30 PSI Low Press.

**Connections:**

10-32 (M5) port, Option 1/8.

**Display:**

Black with white digits

**Reset:**

With or without manual reset.

**Media:**

Filtered air

**Duty Cycle:**

Continuous  
Min. pulse duration 8 ms  
Min. pause 10 ms

**Operating Ambient:**

0°C to + 60°C (32°F to 140°F)

**Weight:**

2.5 oz. To 4.5 oz.

**Materials:**

Molded body, steel frame.

**Dimensions (approx.):**

4 Digit - 7/8" H x 1 1/2" W x 2 5/8" D.  
6,8 Digit - 7/8" H x 1 15/16" W x 2 5/8" D.  
For Screw mtg. add 1" to H dim.  
For base mtg. add 1" to D dim.

**Panel Cut Out:**

4 Digit - 7/8" H x 1 5/16" W  
6,8 Digit - 7/8" H x 1 7/8" W