



The following page(s) are extracted from multi-page Kuhnke product catalogues or CDROMs and any page number shown is relevant to the original document. The PDF sheets here may have been combined to provide technical information about the specific product(s) you have selected.

Hard copy product catalogues, and CDROMs have been published describing Kuhnke Pneumatics, Solenoids, Relays and Electronics; some divided into different books. A list of current publications is available on this web site or from our sales offices. Some may be available for download, but as substantially larger files.

Contact Details

Kuhnke sales and service in North America

Ellis/Kuhnke Controls
132 Lewis Street
Unit A-2, Eatontown
NJ 07724
USA

T: (800) 221 0714
T: (732) 291 3334
F: (732) 291 8154

Important Note

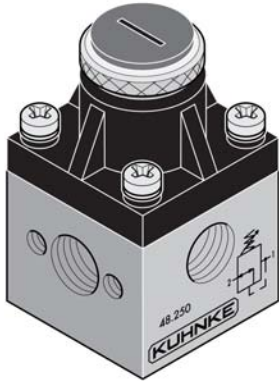
The information shown in these documents is for guidance only. No liability is accepted for any errors or omissions. The designer or user is solely responsible for the safe and proper application of the parts, assemblies or equipment described.

Regulators

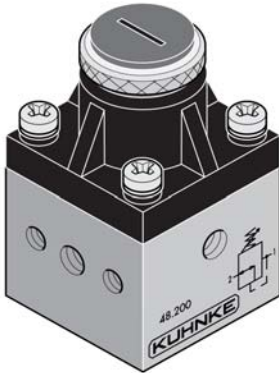
Series 48 Regulator

Kuhnke System Logic Devices

Miniature Screw Driver Adjusted Pressure Regulator



1/8 G or NPT
Ported Design



10-32 (M5)
Ported Design



The Series 48 miniature regulator has characteristics similar to the Series 50 miniature regulator. The unit, however, is specially designed for systems where constant adjustment of pressure is not necessary.

The Series 48 regulator is designed for mounting in panel interiors. Two (10-32) tapped holes are provided in the side of the housing for attachment to panel or mounting brackets. Ports (2) are 180° apart on the sides of the unit housing.

A variety of regulation ranges is available to suit most applications. Special designs are available.

Technical Specifications

Op. Pressure:

0-145 PSI

Regulator Range:

0-75 PSI

Porting:

10-32 (M5) or 1/8

Flow Rate:

Dependent on regulator model. See chart.

Media:

Filtered Air.

Types:

Relieving or non-relieving.
Single stage, diaphragm/spring construction.

Response Time:

(Dependent on secondary volume).
Response average: 45ms at 20% loss of secondary air pressure;
100ms at 50% loss of secondary air pressure.

Adjustment:

Screw driver.
Equipped with locking nut to prevent tampering after setting is made

Materials:

Brass housing (nickel plated),
stainless and brass interior parts,
Buna N seals, polyamide cover.

Operating Ambient:

0°C to +60°C (32°F to 140°F)

Dimensions:

Height – 1 5/8"
Width – 1 3/16" Square.
Weight - 6 ozs.

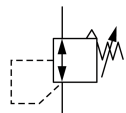
Mounting:

Via (2) 10-32 tapped holes on side of housing.
Mounting bracket available.

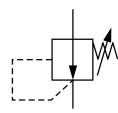
Selection Chart

Secondary Pressure Regulation Range	Catalog Number			
	Relieving Type		Non- Relieving Type	
	10-32 (M5) Ports	1/8 Ports	10-32 (M5) Ports	1/8 Ports
With NPT ports...				
0 – 60 PSI (4 Bar)	---	---	48225-90US	48255-90US
0 – 40 PSI (2.6 Bar)	---	---	48225-80US	48255-80US
0 – 20 PSI (1.3 Bar)	---	---	48225-70US	48255-70US
0 – 10 PSI (.7 Bar)	---	---	48225-60US	48255-60US
0 – 7.5 PSI (.5 Bar)	---	---	48225-50US	48255-50US
With Metric Ports...				
0 – 75 PSI (5 Bar)	48200-00-50-00	48250-00-50-00	48200-00-50-10	48250-00-50-10
0 – 35 PSI (2.5 Bar)	48200-00-25-00	---	48200-00-25-10	---
0 – 15 PSI (1 Bar)	48200-00-10-00	48250-00-10-00	48200-00-10-10	48250-00-10-10

Diagrams



Relieving



Non- Relieving

Accessories

An 'L' shaped bracket catalog number **48255-100** can be used to mount the regulator on a flat surface using (2) 10-32 threaded holes on the rear of the unit.

Operation

Relieving type regulators allow excessive pressure on the secondary side of the regulator to bleed off to the atmosphere, helping maintain steady pressure. Non-relieving types are used where pressure build up is not a concern as in air motors, or air gun applications etc.

Flow Chart

