

The following page(s) are extracted from multi-page Kuhnke product catalogues or CDRoms and any page number shown is relevant to the original document. The PDF sheets here may have been combined to provide technical information about the specific product(s) you have selected.

Hard copy product catalogues, and CDRoms have been published describing Kuhnke Pneumatics, Solenoids, Relays and Electronics; some divided into different books. A list of current publications is available on this web site or from our sales offices. Some may be available for download, but as substantially larger files.

## Contact Details

Kuhnke sales and service in North America

Kuhnke  
Automation Inc.  
P.O Box 1369  
Wayne, N.J.

T: (973) 633 0690  
F: (973) 633 7230  
Email: [sales@kuhnkeusa.com](mailto:sales@kuhnkeusa.com)

### Important Note

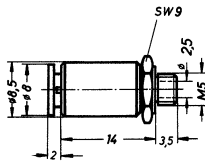
The information shown in these documents is for guidance only. No liability is accepted for any errors or omissions. The designer or user is solely responsible for the safe and proper application of the parts, assemblies or equipment described.

---

### Instant push-In Fittings for 4mm (5/32") O.D. Tubing

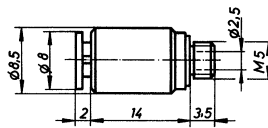
#### Stud Coupling

Hex nut mounting M5 **52010**



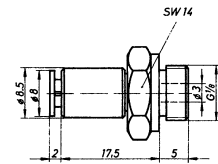
#### Stud Coupling

Allan Key mounting M5 **52011**



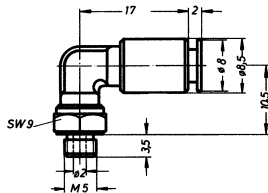
#### Stud Coupling

Hex nut mounting G 1/8 **52170**



#### Elbow

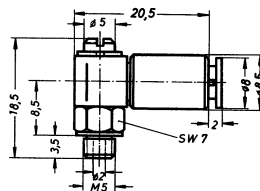
M5 **52090**



#### L – Swivel

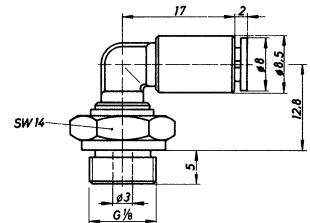
Screw top M5 **52070**

With hex nut top M5 **52095**



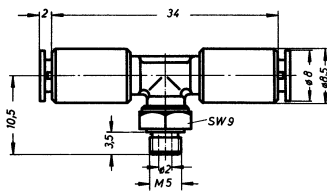
#### Elbow

G 1/8 **52180**



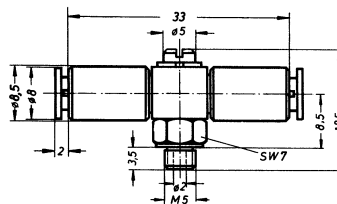
#### T – Banjo

M5 **52100**



#### T – Swivel

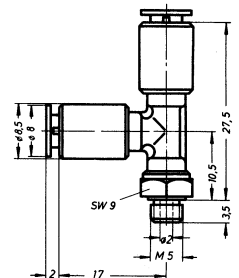
M5 **52080**



#### T – Banjo

M5 **52105**

G 1/8 **52055**



All dimensions in millimeters.

Push-in fittings accept 5/32" tubing with a wall thickness of up to 3/64".

Swivel fittings allow for slow rotary movements.

Male metric threads do not fit 10-32 NPT ports without damaging threads. Female M5 ports accept either M5 or 10-32 NPT male fittings.

Fittings with G1/8 male threads fit both Metric and NPT ports.

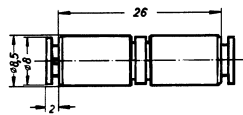
# Fittings and Misc. Accessories

## Series 52 Fittings

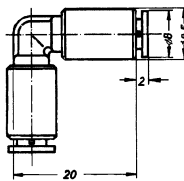
Kuhnke System Logic Devices

### Instant Push-In Fittings for 4mm (5/32") O.D. Tubing

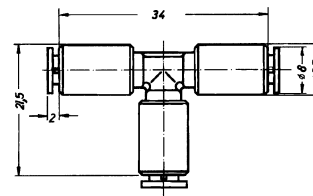
**Double Coupling**  
52020



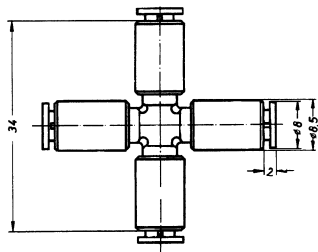
**Elbow Coupling**  
52040



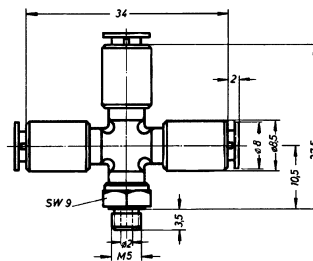
**T – Coupling**  
52050



**Cross Coupling**  
52060

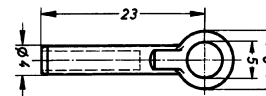


**Cross Coupling**  
52110 with M5 stud

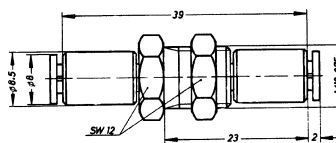


**Tube Plug**

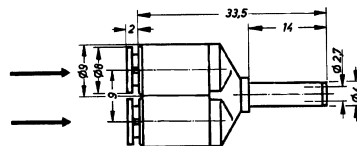
52185 for 2 mm I.D. tubing  
52190 for 3 mm I.D. tubing



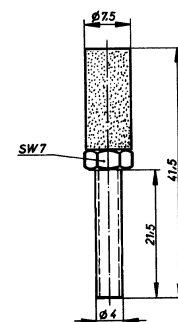
**Bulkhead Coupling**  
52030



**Y – Coupling**  
52025



**Silencer**  
52115  
(for use on push-in fittings)



All dimensions in millimeters.

Push-in fittings accept 5/32" tubing with a wall thickness of up to 3/64".

Male metric threads do not fit 10-32 NPT ports without damaging threads. Female M5 ports accept either M5 or 10-32 NPT male fittings.

Fittings with G1/8 male threads fit both Metric and NPT ports.