

The following page(s) are extracted from multi-page Kuhnke product catalogues or CDRoms and any page number shown is relevant to the original document. The PDF sheets here may have been combined to provide technical information about the specific product(s) you have selected.

Hard copy product catalogues, and CDRoms have been published describing Kuhnke Pneumatics, Solenoids, Relays and Electronics; some divided into different books. A list of current publications is available on this web site or from our sales offices. Some may be available for download, but as substantially larger files.

## Contact Details

Kuhnke sales and service in North America

Kuhnke  
Automation Inc.  
P.O Box 1369  
Wayne, N.J.

T: (973) 633 0690  
F: (973) 633 7230  
Email: [sales@kuhnkeusa.com](mailto:sales@kuhnkeusa.com)

### Important Note

The information shown in these documents is for guidance only. No liability is accepted for any errors or omissions. The designer or user is solely responsible for the safe and proper application of the parts, assemblies or equipment described.

---

# Miniature Valves

Kuhnke Miniature Valves

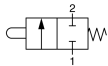
## Accessories

(Manual and Mechanically Operated Valves)

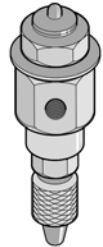
### Plunger Operated 2 Way Poppet Valve

42250

**Material:** Brass  
**Flow:** 3 CFM @ 100 PSI  
**Dimensions:** 1 3/4" L x 1/2" Hex.  
**Weight:** 1 oz.  
**Mounting:** Mounts in 5/16" hole

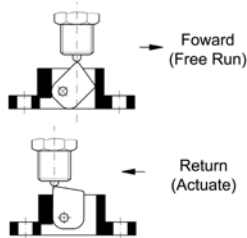


Plunger operated valve can be used to detect end of travel. Actuation force is pressure dependent and is approx. 1.1 lbs. at 90 PSI. Actuation stroke is between 1/64" and 1/16". Rear port accepts 1/8 ID tubing, secondary port is 10-32 (M5).

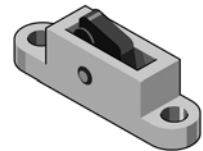


### One Way Trip Mechanism

42300



One way trip mechanism can be used with plunger or ball operated valves. In one direction, mechanism forces ball to actuate valve. In the opposite traveling direction, mechanism is forced into base offering no resistance for valve switching. Tripping mechanism travel into base is 5/64". Overall dimensions: 1 1/8" L x 1/4" W x 3/8" H.



### Air Bleed Hose and Nozzle

43138

Hose and nozzle accessory for Series 79, 81 and 72 air jet detector valves. Hose is 18" long, 5/32" OD tubing with push-in nozzle. A fitting is also included. Tubing can be cut to size.



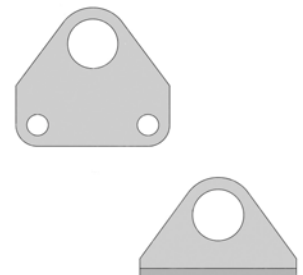
### Mounting Brackets

Flat Mounting Bracket **43010-1**  
L Shaped Mounting Bracket **43010-2**

**Dimensions:**

Flat - 1" H x 1 9/16" W.  
L shape - 3/4" H. x 1 9/16" W x 3/8" D.  
Mounting holes (2) 1/8" Dia. on 1 1/4" Centers.

Used to mount mechanically operated valves with screw thread mounting collar and nut. Made from zinc plated sheet steel. Valve mounting hole is 1/2 inch diameter.



# Miniature Valves

---

## Accessories

Kuhnke Miniature Valves

(Manual and Mechanically Operated Valves)

## Miniature OT Pushbutton Operators

Kuhnke series 46, 74, 79 and 81 valves can be used with *Moeller* type M22 oil tight pushbuttons. See *individual types for valve catalog numbers*. Operators are used on control panels to enable pneumatic valves to be mounted along with electromechanical devices. Operators are standard miniature size (7/8" dia. mounting hole). For selection and descriptions of pushbuttons visit [www.moeller.net](http://www.moeller.net). To order operators, contact *Moeller* directly. Following are typical actuator catalog numbers;

Description	Moeller Type	Moeller Article No.
Momentary Pushbutton	M22-D-S	216590
Two position Selector	M22-S-WR	216856
Mushroom Head Pushbutton	M22-DP-S	216712
Latching Pushbutton	M22-PV	216876
Key Lock	M22-WRS	216887

---

## Replacement Operators

2 Way Roller Lever	<b>MM4930017</b>
One Way Roller Lever	<b>MM4930016</b>
Cat Whisker (79/81)	<b>MM4920003</b>